

## TrailerWIN fix 2017-10

**Valid for:** TrailerWIN versions from 2017-05 until 2017-07 manufactured between 19.5.2017 and 17.10.2017.

**Description:** Missing models in AJK Hookloaders

**Solution:** Installing this update package will correct the drawing in TrailerWIN. Note that this package is only for program discs manufactured between above mentioned dates.

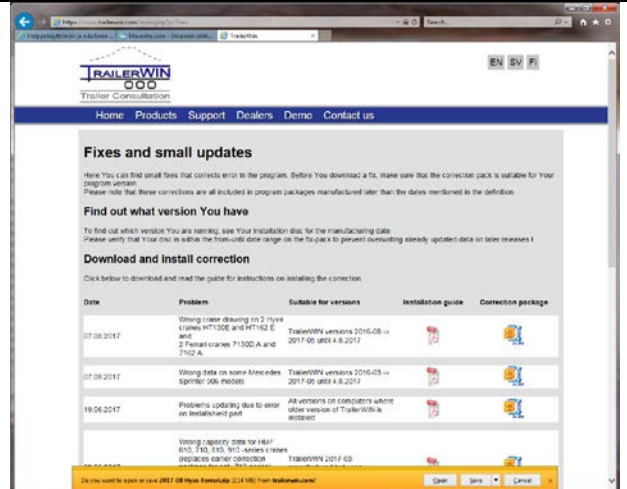
### Steps:

On our homepage: [www.trailerwin.com](http://www.trailerwin.com) select "Support" and "Fixes" or click on this link:

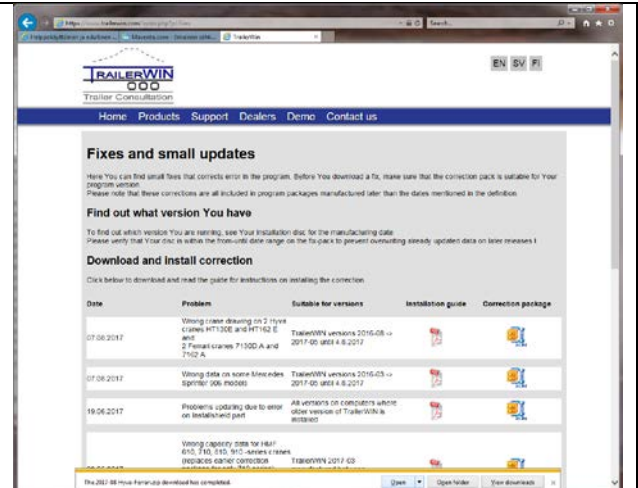
<https://www.trailerwin.com/userfiles/images/Fixes/2017-10 AJK Hookloaders.zip>

or write the address directly in the address-field of Your web-browser.

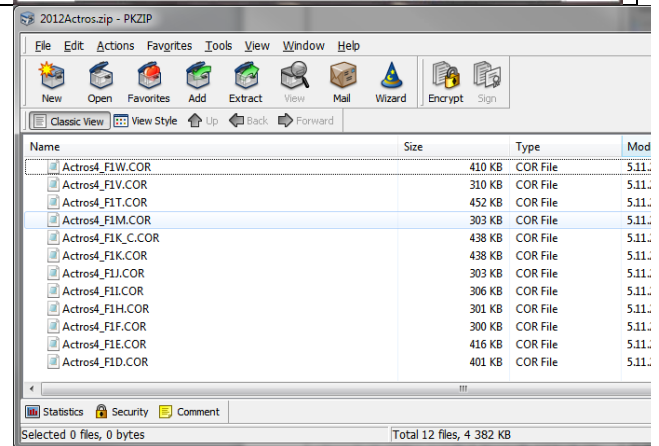
Note: Following instructions and pictures are examples.

<p>When pop-up download appears: <b>Choose Save</b></p>	 <p>The screenshot shows the TrailerWIN website's 'Fixes and small updates' page. It includes a table with columns for Date, Problem, Suitable for versions, Installation guide, and Correction package. The table lists three updates: one for crane drawing errors (dated 07.08.2017), one for wrong data on crane models (dated 07.08.2017), and one for incorrect capacity data (dated 19.06.2017). Each update row has icons for the installation guide and the correction package.</p> <table border="1"><thead><tr><th>Date</th><th>Problem</th><th>Suitable for versions</th><th>Installation guide</th><th>Correction package</th></tr></thead><tbody><tr><td>07.08.2017</td><td>Wrong crane drawing on 2 types cranes HT130E and HT162 E and 2 Pental cranes 7130D A and 7102 A</td><td>TrailerWIN versions 2016.08.01 - 2017.05.01 and 4.8.2017</td><td></td><td></td></tr><tr><td>07.08.2017</td><td>Wrong data on crane models (Sprint) 506, 600088</td><td>TrailerWIN versions 2016.03.01 - 2017.05.01 and 4.8.2017</td><td></td><td></td></tr><tr><td>19.06.2017</td><td>Incorrect capacity data to error on established part</td><td>All versions on computers where older version of TrailerWIN is installed</td><td></td><td></td></tr></tbody></table>	Date	Problem	Suitable for versions	Installation guide	Correction package	07.08.2017	Wrong crane drawing on 2 types cranes HT130E and HT162 E and 2 Pental cranes 7130D A and 7102 A	TrailerWIN versions 2016.08.01 - 2017.05.01 and 4.8.2017			07.08.2017	Wrong data on crane models (Sprint) 506, 600088	TrailerWIN versions 2016.03.01 - 2017.05.01 and 4.8.2017			19.06.2017	Incorrect capacity data to error on established part	All versions on computers where older version of TrailerWIN is installed		
Date	Problem	Suitable for versions	Installation guide	Correction package																	
07.08.2017	Wrong crane drawing on 2 types cranes HT130E and HT162 E and 2 Pental cranes 7130D A and 7102 A	TrailerWIN versions 2016.08.01 - 2017.05.01 and 4.8.2017																			
07.08.2017	Wrong data on crane models (Sprint) 506, 600088	TrailerWIN versions 2016.03.01 - 2017.05.01 and 4.8.2017																			
19.06.2017	Incorrect capacity data to error on established part	All versions on computers where older version of TrailerWIN is installed																			

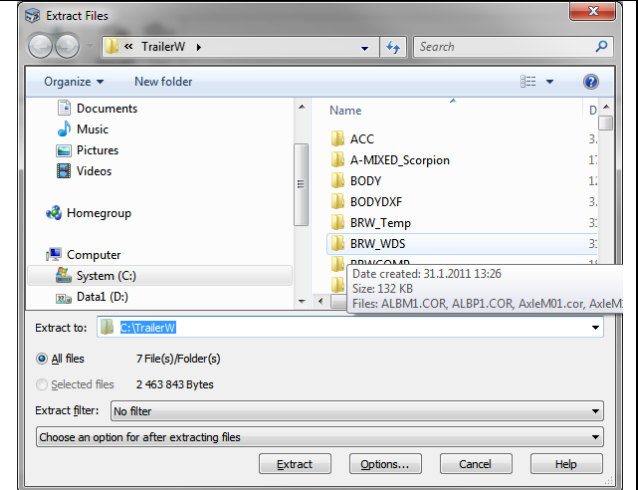
Choose Open

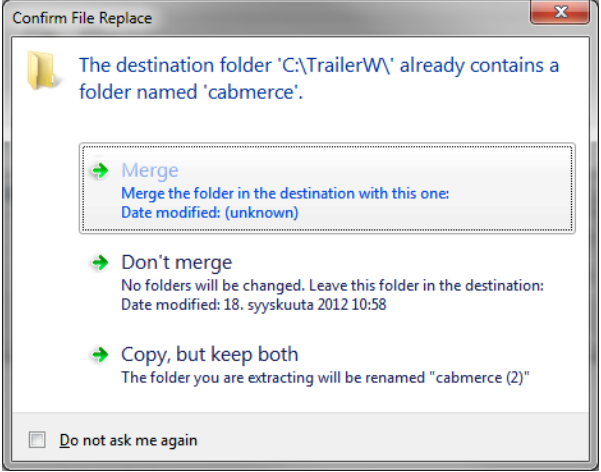
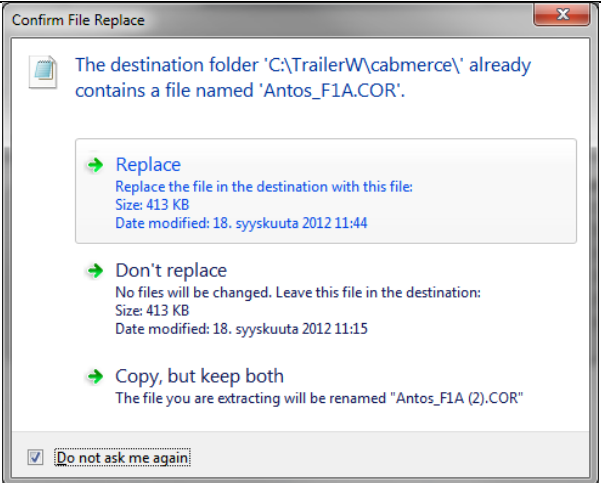
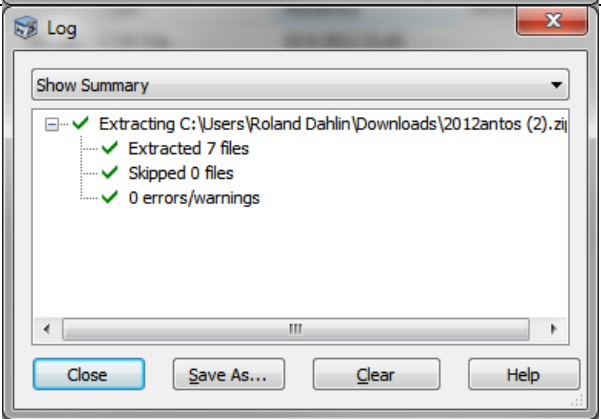


When file opens in zip-program  
Choose Extract



When asked for destination, choose the directory where TrailerWIN is installed. Normally C:\TrailerW.  
Choose C:\TrailerW



<p>When warned about folder already exists, <b>Choose Merge</b></p>	
<p>When warned about same files already exists: <b>Check "Don't ask me again" and click Replace.</b></p>	
<p><b>Files extracted successfully</b></p>	

**Re-start TrailerWIN and re-select the AJK Hookloaders and now the models will appear in the list.**

**If problem persists:** Please contact Trailer Consultation with example of outprint and original TrailerWIN file attached.

**E-mail:** [info@trailerwin.com](mailto:info@trailerwin.com)