

## TrailerWIN fix 2017-10

**Valid for:** TrailerWIN versions from 2017-05 until 2017-07 manufactured between 19.5.2017 and 17.10.2017.

**Description:** Missing models in Hyva Waste standard bodies

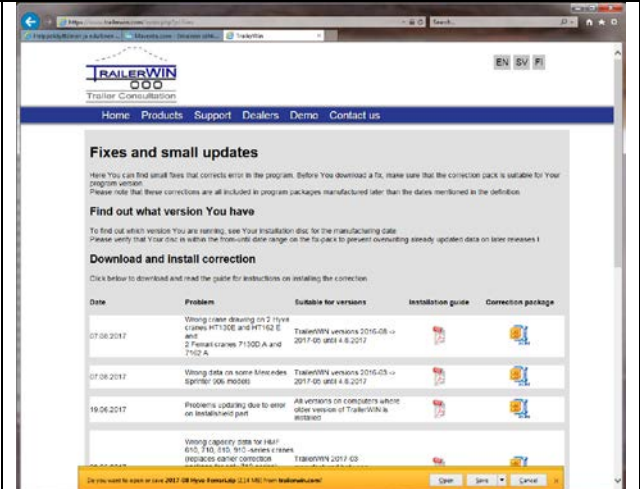
**Solution:** Installing this update package will correct the drawing in TrailerWIN. Note that this package is only for program discs manufactured between above mentioned dates.

### Steps:

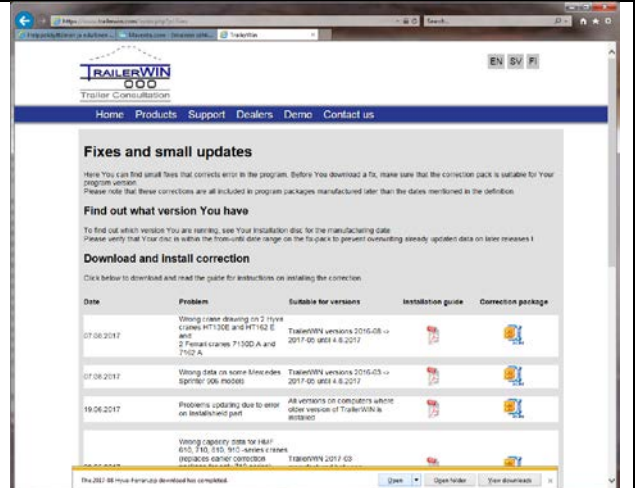
On our homepage: [www.trailerwin.com](http://www.trailerwin.com) select "Support" and "Fixes" or click on this link:  
[https://www.trailerwin.com/userfiles/images/Fixes/2017-10%20Hyva\\_Waste.zip](https://www.trailerwin.com/userfiles/images/Fixes/2017-10%20Hyva_Waste.zip)

or write the address directly in the address-field of Your web-browser.

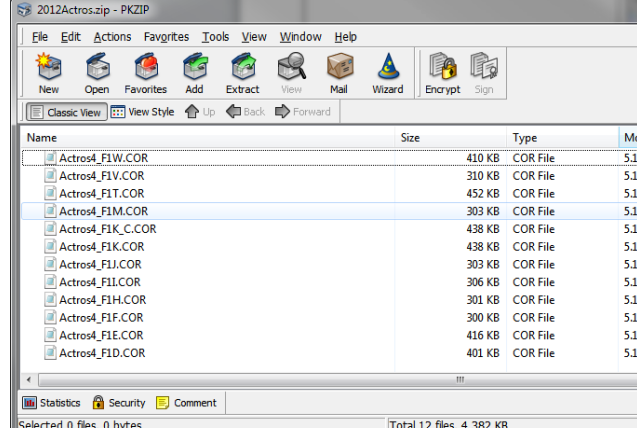
Note: Following instructions and pictures are examples.

| <p>When pop-up download appears:<br/><b>Choose Save</b></p> |  <p>The screenshot shows the TrailerWIN website's 'Fixes and small updates' page. It contains a table with columns for Date, Problem, Suitable for versions, Installation guide, and Correction package. The table lists three updates: one for crane drawing errors (dated 07.08.2017), one for wrong data on crane models (dated 07.08.2017), and one for problems updating due to error on established part (dated 19.06.2017). Each row includes a date, a description of the problem, the applicable TrailerWIN versions, a red 'X' icon for the installation guide, and a blue folder icon for the correction package.</p> <table border="1"><thead><tr><th>Date</th><th>Problem</th><th>Suitable for versions</th><th>Installation guide</th><th>Correction package</th></tr></thead><tbody><tr><td>07.08.2017</td><td>Wrong crane drawing on 2 Hyva cranes HT130E and HT162 E and 2 Ferial cranes 7130D A and 7162 A</td><td>TrailerWIN versions 2016-08-01 2017-05 until 4.8.2017</td><td></td><td></td></tr><tr><td>07.08.2017</td><td>Wrong data on crane models (Sprint) 506, 600088</td><td>TrailerWIN versions 2016-03-01 2017-05 until 4.8.2017</td><td></td><td></td></tr><tr><td>19.06.2017</td><td>Problems updating due to error on established part</td><td>All versions on computers where older version of TrailerWIN is installed</td><td></td><td></td></tr></tbody></table> | Date   | Problem            | Suitable for versions | Installation guide | Correction package | 07.08.2017 | Wrong crane drawing on 2 Hyva cranes HT130E and HT162 E and 2 Ferial cranes 7130D A and 7162 A | TrailerWIN versions 2016-08-01 2017-05 until 4.8.2017 |  |  | 07.08.2017 | Wrong data on crane models (Sprint) 506, 600088 | TrailerWIN versions 2016-03-01 2017-05 until 4.8.2017 |  |  | 19.06.2017 | Problems updating due to error on established part | All versions on computers where older version of TrailerWIN is installed |  |  |
|---|--|--|--------------------|-----------------------|--------------------|--------------------|------------|--|---|--|--|------------|---|---|--|--|------------|--|--|--|--|
| Date  | Problem  | Suitable for versions  | Installation guide | Correction package    |                    |                    |            |  |   |  |  |            |   |   |  |  |            |  |  |  |  |
| 07.08.2017  | Wrong crane drawing on 2 Hyva cranes HT130E and HT162 E and 2 Ferial cranes 7130D A and 7162 A   | TrailerWIN versions 2016-08-01 2017-05 until 4.8.2017                    |                    |                       |                    |                    |            |  |   |  |  |            |   |   |  |  |            |  |  |  |  |
| 07.08.2017  | Wrong data on crane models (Sprint) 506, 600088  | TrailerWIN versions 2016-03-01 2017-05 until 4.8.2017                    |                    |                       |                    |                    |            |  |   |  |  |            |   |   |  |  |            |  |  |  |  |
| 19.06.2017  | Problems updating due to error on established part   | All versions on computers where older version of TrailerWIN is installed |                    |                       |                    |                    |            |  |   |  |  |            |   |   |  |  |            |  |  |  |  |

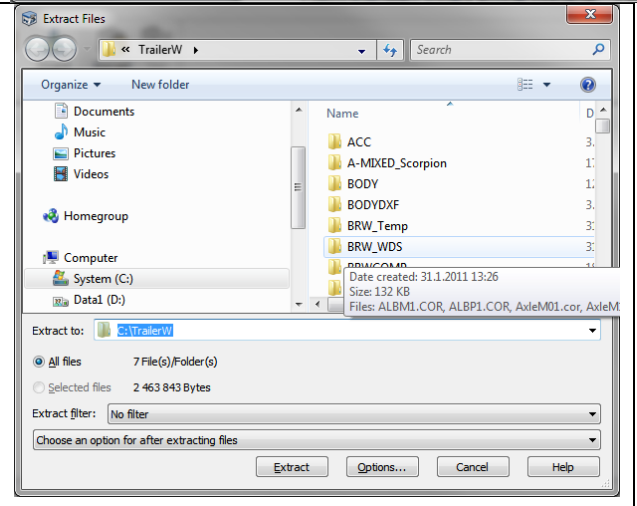
Choose Open

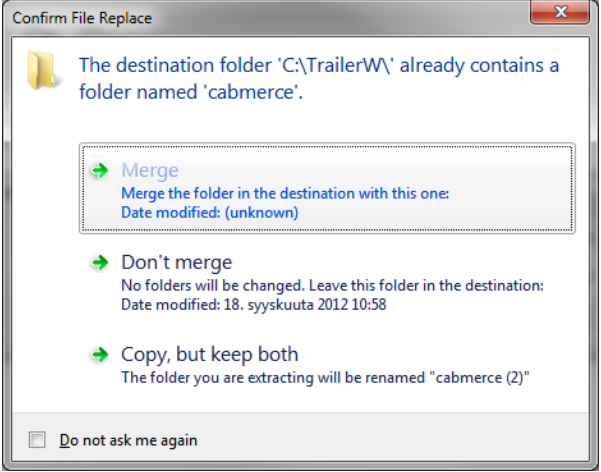
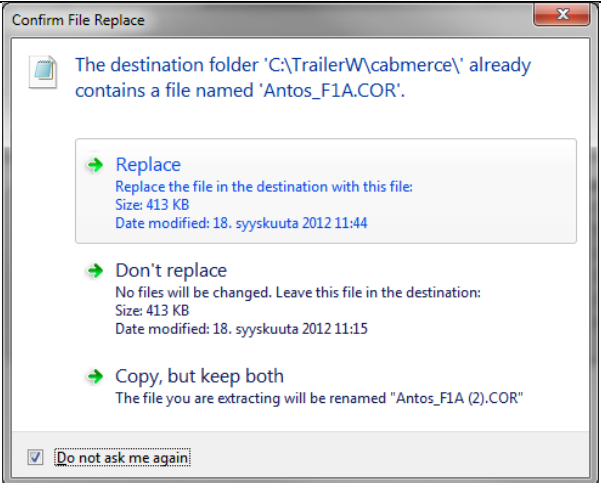
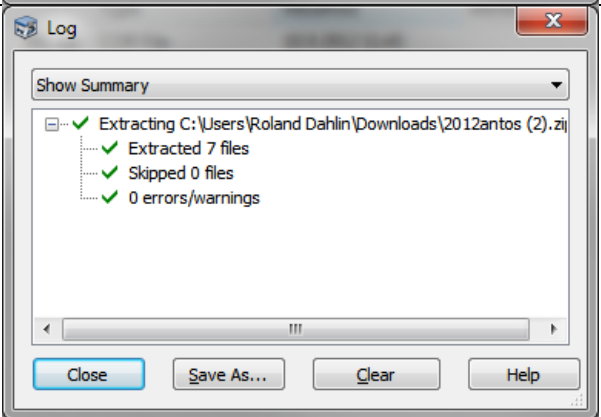


When file opens in zip-program  
Choose Extract



When asked for destination, choose the directory where TrailerWIN is installed. Normally C:\TrailerW.  
Choose C:\TrailerW



|  |  |
|--|--|
| <p>When warned about folder already exists,<br/><b>Choose Merge</b></p>                                      |    |
| <p>When warned about same files already exists:<br/><b>Check "Don't ask me again" and click Replace.</b></p> |   |
| <p><b>Files extracted successfully</b></p>   |  |

Re-start TrailerWIN and re-select the Hyva Waste standard bodies and now the models will appear in the list.

If problem persists: Please contact Trailer Consultation with example of outprint and original TrailerWIN file attached.

E-mail: [info@trailerwin.com](mailto:info@trailerwin.com)